

CHARLESGATE ALLIANCE

Talk About DCR Charlesgate: The Third Meeting

Monday, April 9, 2017 | 7pm to 9pm
100 Bay State Road, Room 545

Join us as we continue to discuss possibilities that we see for improvement to DCR Charlesgate Area.

charlesgatealliance.org



April 28th Events

Charlesgate Cleanup

Saturday, April 28, 2018
9am-12pm: Meet at Charlesgate
East and Beacon Street
SIGN UP COMPLETE

Charlesgate In Bloom Fundraiser

Saturday, April 28, 2018
5pm-7pm: The Ayer Mansion
395 Commonwealth Ave
RSVP ONLY | \$75 Tickets



Charlesgate Community Meeting

The third meeting

Charlesgate Park Improvement Outreach Process and Concept Design

April 9th, 2018

Convening organizations:	Charlesgate Alliance Emerald Necklace Conservancy
Thanks to:	Many, many community members for donations The Solomon Foundation The Barr Foundation
Agency involvement:	Department of Conservation and Recreation (DCR) Massachusetts Dept. of Transportation (MassDOT)
Designer:	Landing Studio
Consultants:	Inter-fluve, river restoration specialist



THE LAWRENCE & LILLIAN SOLOMON FOUNDATION



dcr

Massachusetts

Agenda

PART 1 – 7:05-7:40PM

- Welcome, Introducing Charlesgate, and the process to date –
Karen Mauney-Brodek, Emerald Necklace Conservancy
Parker James, Charlesgate Alliance
- Past and upcoming events and fundraising
 - Wine and Cheese Tasting with Silent Auction, January 28th
 - Muddy River Cleanup, April 28th
 - Charlesgate In Bloom, April 28th
- Findings from December 4th, 2017 Talk About
- Design development update

PART 2 – 7:40-8:40PM

COMMUNITY FEEDBACK WORK TABLES

PART 3– 8:45-9PM

REPORTING BACK & NEXT STEPS

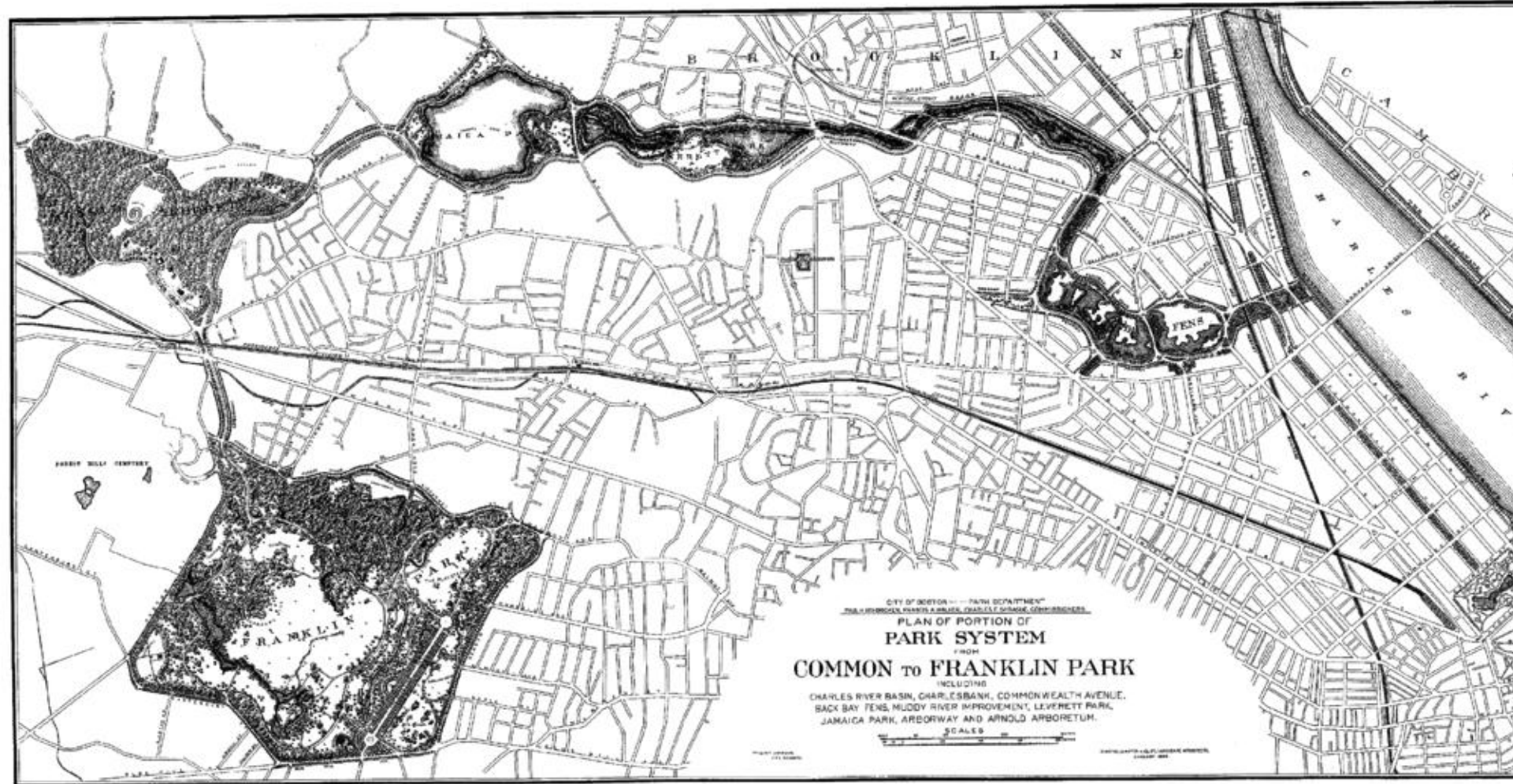




Olmsted designed Charlesgate Park as

THE CRITICAL LINK

In Boston's Park System

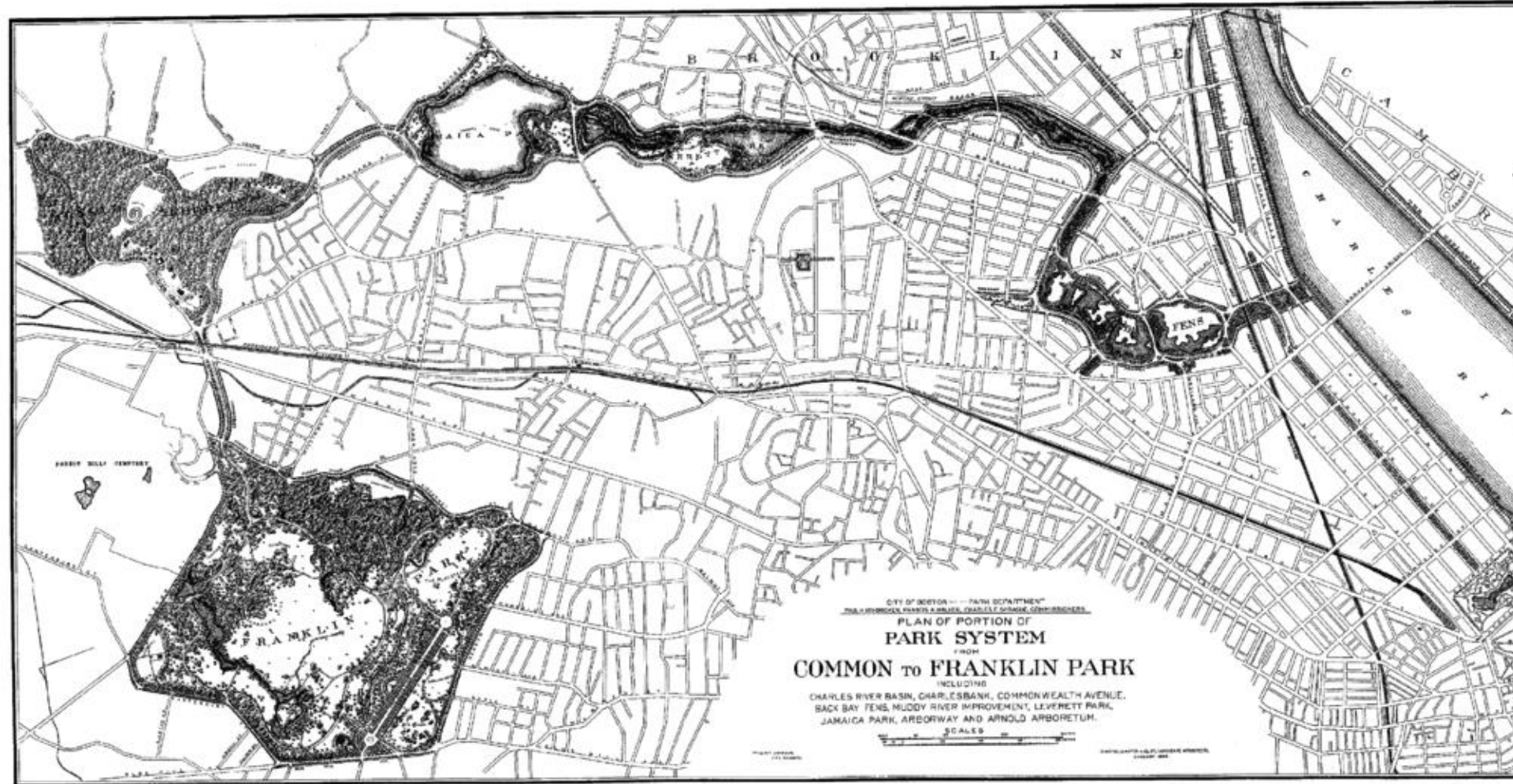








**Olmsted Designed the Emerald Necklace
To Serve MULTIPLE FUNCTIONS:
To Provide Drainage, Flood Control,
& Transportation Infrastructure,
as well as a beautiful urban Park.**



CITY OF BOSTON — PARK DEPARTMENT
 THE HISTORICAL MAPS & PLANS OFFICE, UNDER THE SUPERVISION OF THE COMMISSIONER OF THE CITY OF BOSTON
**PLAN OF PORTION OF
 PARK SYSTEM
 FROM
 COMMON TO FRANKLIN PARK**
 INCLUDING
 CHARLES RIVER BASIN, CHARLESBANK, COMMONWEALTH AVENUE,
 BACK BAY FENS, MUDDY RIVER IMPROVEMENT, LEVERETT PARK,
 JAMAICA PARK, ARBORWAY AND ARNOLD ARBORETUM.
 SCALES

PRINTED AND PUBLISHED BY THE CITY OF BOSTON,
 1908







Why was the Stony Brook Culverted?

- Flooding
- Industrial waste
- Human waste
- To create space for urban development
- To protect people from sewage related diseases



Figure 11. The culverting of Stony Brook at Forest Hills, about 1905.











HOTEL
BRAEMORE

87145

Hotel Braemore

466 Commonwealth Ave., at Charlesgate West — Boston, Mass.





Section of New Highway in the Back Bay, Boston, Mass.











- The Bowker Overpass Was Constructed in 1965 -

In 1966, it became ILLEGAL to Use Federal Funds TO TAKE PUBLIC PARKS to Built Highways.















Charlesgate
ALLIANCE









Emerald Necklace
CONSERVANCY



Emerald Necklace
CONSERVANCY

Alpha





18TH ANNUAL EARTH DAY
CHARLES RIVER CLEANUP
APRIL 29TH 2017


Reebok

LADDER 15

ENGINE 33





THE LAWRENCE & LILLIAN SOLOMON FOUNDATION









dcr

Massachusetts



*mass*DOT

Massachusetts Department of Transportation





SICUT PATRIBUS SIT DEUS NOBIS



BOSTONIA.
CONDITA A.D.
1630.

REGIMINE DONATA A.D. 1822.

LANDING STUDIO

[Architecture](#)

[Operations](#)

[Light](#)

[Small](#)

[News](#)

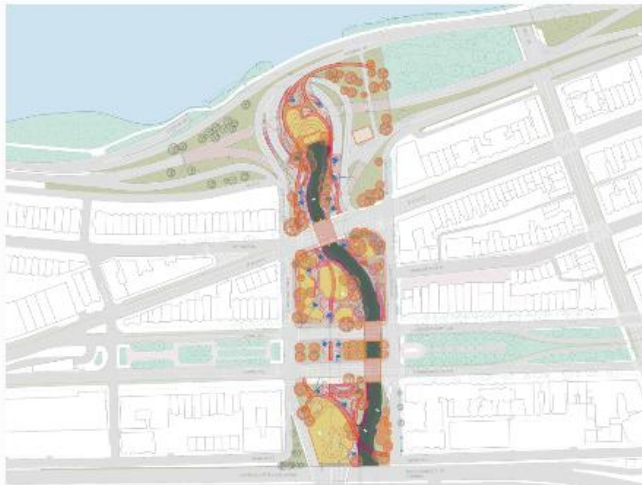
[About](#)



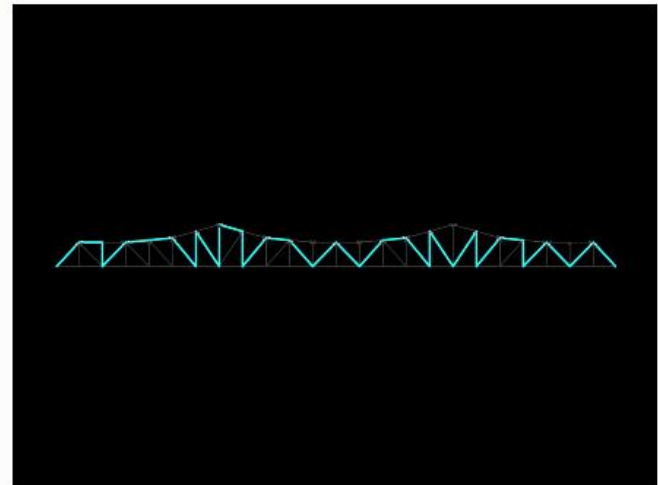
The PORT



Infra-Space 1: Underground at Ink Block



Charlesgate



Truss Bridge Lighting

The Concept Design and Outreach Process

What we've done:

Outreach with local community

- Walk About – October 2017
- Talk About 1 – October 2017
- Talk About 2 – December 2017
- Talk About 3 – April 2018
- Monthly Charlesgate Alliance Leadership Meetings

Coordination with agency partners

- DCR and MassDOT
 - November 2017
 - January 2018
 - March 2018
- Additional coordination on MassDOT's future projects

Fundraising

- Silent Auction – January 2018 and upcoming events

Meetings with other stakeholders and experts

- Charles River Watershed Association
- MMOC for the Muddy River Restoration Project
- Boston Water and Sewer Commission for Green Infrastructure projects

The Concept Design and Outreach Process

Where we're headed:

- Charlesgate Cleanup– 9am – 12pm on April 28, 2018
- Charlesgate in Bloom Spring Benefit – 5pm – 7pm on April 28, 2018
- Conclusion of the Concept Design and Outreach Process:
 - Talk About 4 – June 2018
 - Final report:
 - Concept design plans and perspectives
 - Order-of-magnitude cost estimate
 - Phasing recommendations for shorter term and longer term improvements

What comes next:

- Fundraising for:
 - Design and engineering development and permitting
 - Continuing to work with our agency partners and their review processes
 - Updates to the community as the design develops
 - Capital improvements
 - Maintenance

Charlesgate in Bloom

Cocktail Party

Come enjoy signature drinks
wine and hors d'oeuvres to
benefit the Charlesgate Alliance

Saturday, April 28 | 5 - 7

The Ayer Mansion
395 Commonwealth Avenue

RSVP ONLY | Tickets \$75



All proceeds to benefit the Charlesgate Alliance | charlesgatealliance.org



Past Events

WINE AND CHEESE TASTING WITH SILENT AUCTION JAN. 28



Past Events

WINE AND CHEESE TASTING WITH SILENT AUCTION JAN. 28



Upcoming Events

CHARLESGATE CLEANUP APRIL 28, 9AM – 12PM

Meet at Charlesgate East and Beacon Street



Upcoming Events

Charlesgate in Bloom

Cocktail Party

Come enjoy signature drinks
wine and hors d'oeuvres to
benefit the Charlesgate Alliance

Saturday, April 28 | 5 - 7

The Ayer Mansion
395 Commonwealth Avenue

RSVP ONLY | Tickets \$75



All proceeds to benefit the Charlesgate Alliance | charlesgatealliance.org



Findings From December 4th Meeting

...PIN AT THE LOCATION
OF YOUR HOME OR WORK
NEAR CHARLESGATE

(IF YOUR HOME OR WORK IS OFF THE MAP, PLEASE
WRITE IT ON THE ATTACHED SHEET)





Talk About Agenda

PART 1 - 7:00-7:40PM

WELCOME, PROGRESS UPDATE

- Welcome -
 - Karen Mosney-Brosch, Emerald Necklace Conservancy
 - Peter James, Challenge Alliance
- Takeaways from Oct. 10 Talk About DCR Challenge Park meeting
- Initial spatial and circulation framework
- Workshop topics intro

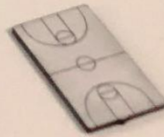
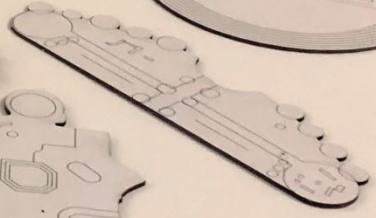
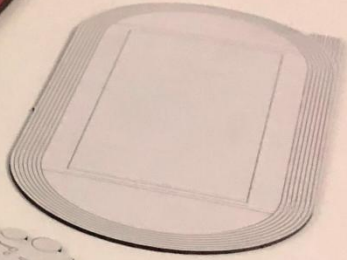
PART 2 - 7:40-9PM

WORKSHOPS

- 7:40 Guidelines/operations
- 7:45-8:10 Round 1
- 8:10-8:30 Round 2
- 8:35-9 Report back and round



AMENITIES AND RECREATION













Community Feedback: December 4th Meeting

Connectivity

Connectivity

- getting from Fenway to EGP.
 - 1 - come down the the W side of, may already be in the plan.
 - Charlesgate ramps are biggest issue for biking
- Biggest area to walk.
- conversations pro and con about additional construct.
- only way to get to the
 - lighting, signage for the entrance to the new bike path, Fenway and an opening.

• better flow through bike access to the main esplanade commuter path from Fenway

- West side of park has more space for biking

• make it feel
victoria garden

• make it feel like a more continuous space like the Victoria garden, Fenway etc.

4★ - Who owns the sidewalks? need to know for shoveling snow. Problems last year. DCR owns some, City of Boston some, need to find out.

2★ - Bridge for bike path by circles into South Field. Can come out to Comm. Ave by Charlesgate West. Side.

- Path crosses Comm. Ave twice Charlesgate West. Then connect with new bike path.

- Back street dangerous to ride along a full of pot holes.

- Pedestrian & bike bridge from Newbury St. leads to

- can also ^{have bridge to} connect to other part of Newbury St that Brookline Ave. Good for walking to Fenway park from Back Bay. (i.e. connecting 3 parts of Newbury Street)

3★ - Traffic light on Storrow Drive so people can cross from "The Alley" area to Esplanade. Stop light for pedestrian crossing.

Water &
Landscape
Ecology

Increasing water flow (mosquitoes)
clogging. ^{little} change in bed level.
Size of drain openings may be too small.
v. expensive to enlarge openings.

Clean drains more realistic.
Current expense should not be an obstacle
to future vision.

Erosion, sediment, gasoline from overpass all flow into
Nutrients feed algae growth.

Research discovering which drains from ^{BWSC} Bowker
go into basin. Once identified an address
Solutions / Landscaping solutions Plant

Embankments
Abutments of overpass are steep & impervious.
Sediment, trash carried into river.

Greenery along edge of river to filter run off
- appropriate vegetation

Shade from overpass

Greenery along edge of river to filter run off

Dog Park

Group - 7
Group - 3

- Areas - South Field
- Alice

- Areas - South Field
North Field

Dog park

- Recorder: please note how many participants are in this group for
- Materials:
 - Large printed existing conditions plan of Charlesgate Park area
 - Drawing: plan printed to show 'space types' analysis at Charlesgate Park
 - Aerial cutouts of various dog parks to compare sizes/scales
 - Printed list: example 'rules' for dog parks
 - Printed list: materials commonly used in dog parks
- 1. Where could a dog park be located at Charlesgate Park? The group can use the cut-outs to test sizes. Trace paper and markers can be used to sketch over plan drawings.
- 2. What are the most important considerations or elements to include in a dog park?
- 3. What should be included as amenities or features?

- removal of N. wall but reinstall sand barrier.

- 4', 5', 6' fence with double-gated entrances, wheelchair accessible
- Waste management - scooper station, bags
- Park rules
- Shade
- Benches, tables |
- Paths
- Splash pad
- Large dog/small/frail dog areas |
- Dog drinking fountain |
- Agility area/equipment |
- Irrigation

- removal of N. wall but reinstall sand barrier.
→ double use
- Partner w/ rescue league

- drainage

- 4. What are some materials that work well in dog parks?

Some examples-

- Turf designed for dogs
- K-9 turf: plant-based materials and nylon make it durable. Allow for water to penetrate
- Rubberized mulch pads
- Stone dust
- Pea stone or rice stone |
- Mulch and wood chips
- Pebbles
- Natural grass

- dog shower
- start w/ skeletal system
- paid membership
- w/ electric access
- size dogs, dog personalities
- rules (picking up, grooming)
- message board
- comment box
- media in-vite.
- snow removal?

- 5. What are some examples of really good dog parks?
- 6. What are examples of things to avoid or problems to consider?
- 7. Who would like to continue giving input as part of a working group on dog parks?

Amenities &
Recreation

AMENITIES PART 2

- GIANT Chess / small Chess
checkers / checkers
- Pickleball / racketball / Tennis
w/ backboard
- mini golf course
 - bocce
 - croquet
- flexible netting for badminton
or volleyball
- scooter / slow bicycle lane
- small play feature in circle
patio
 - see monster for climbing
 - splash park
 - sound playground
- seating locations

play feature

bicycle lane

- seating locations

Art

Art table

The Grove should stay green

Curatorship

How much funding is available

columns - not too busy; soft pastel?

have to weigh what looks good in day and at night

→ doesn't have to be totally standardized test out - do things work?

don't want too "busy" a look

→ could colleges of art be asked to suggest? SMFA, Mass. College of Art, BU
Colleges of the Fenway Professors could help w/ curation
MIT, Wentworth, BAC, etc. Northeastern
Mass Boston

~~past~~ lighting for pedestrians
artists

The Grove should stay green

create lighting that's impervious to vandalism

→ create art work w/ the plantings

The Allee would be a good area for Storm King-like sculpture → could handle wind sculpture that could be seen from another place

too much graffiti would be disruptive

too much

Zen Garden - peacefully concrete

Temporary Installations & Events

- Recorder: please note how many participants are in this group for Round 1 and Round 2.
- Materials:
 - Large printed existing conditions plan of Charlesgate Park area
 - Drawing: plan printed to show 'space types' analysis at Charlesgate Park
 - Digital images on monitor: axons of different ideas for events

1. What kinds of events would you like to see at Charlesgate Park?
Some examples-

Swings/
Chairs like
Lawn or D

- Ornamental lighting - yes
- Image projections - yes
- Movie in the park - yes
- ~~Visioning activities, testing of the site (Urban Catalyst examples).~~
- Temporary art installations - yes
- ~~Dog show~~

Scrimis - space to decorate.

2. What kinds of events would be fun at Charlesgate Park?

- [Plays, poetry readings
next space for these
activities + a cafe

3. What are community groups or cultural organizations that might be interested in collaboration?
Some examples-

- Schools
- Arts/Cultural organizations -
- Others?

- large dinner party in the park.

4. What events already happen in or around Charlesgate Park?
Some examples-

- Marathon
- Red Sox games
- Others?

music
Dancing studios } early evening but need to be considerate of neighbors.

Temporary murals
Red Sox - softball game.

Bottle performance

Temporary murals

Design Principles

- **Improve the Muddy River water quality and habitat**
 - Manage as much storm water as possible through landscape systems
 - Design habitat-rich landscapes

Design Principles

- **Reconnect Boston's 3 park systems and neighborhoods across Charlesgate Park**
 - Bike lanes
 - Safe pedestrian connections
 - Open up views

Design Principles

- **Celebrate Charlesgate Park's history**
 - Incorporate significant built elements and flora
 - Develop a language that complements Charlesgate Park's design legacy

Design Principles

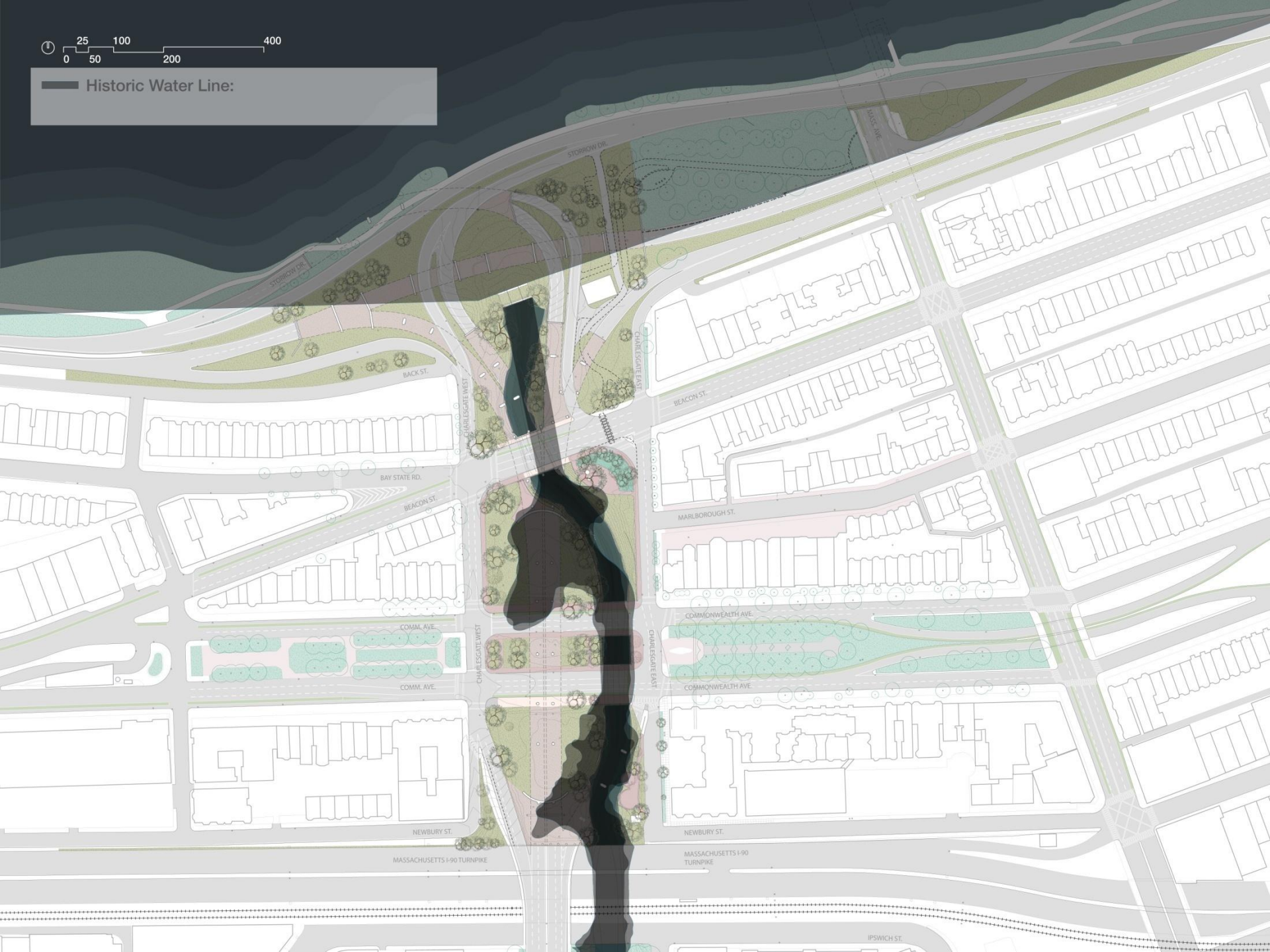
- **Activate the site with new uses**
 - Provide amenity spaces that support a variety of active and passive uses
 - Dog park
 - Flexibility

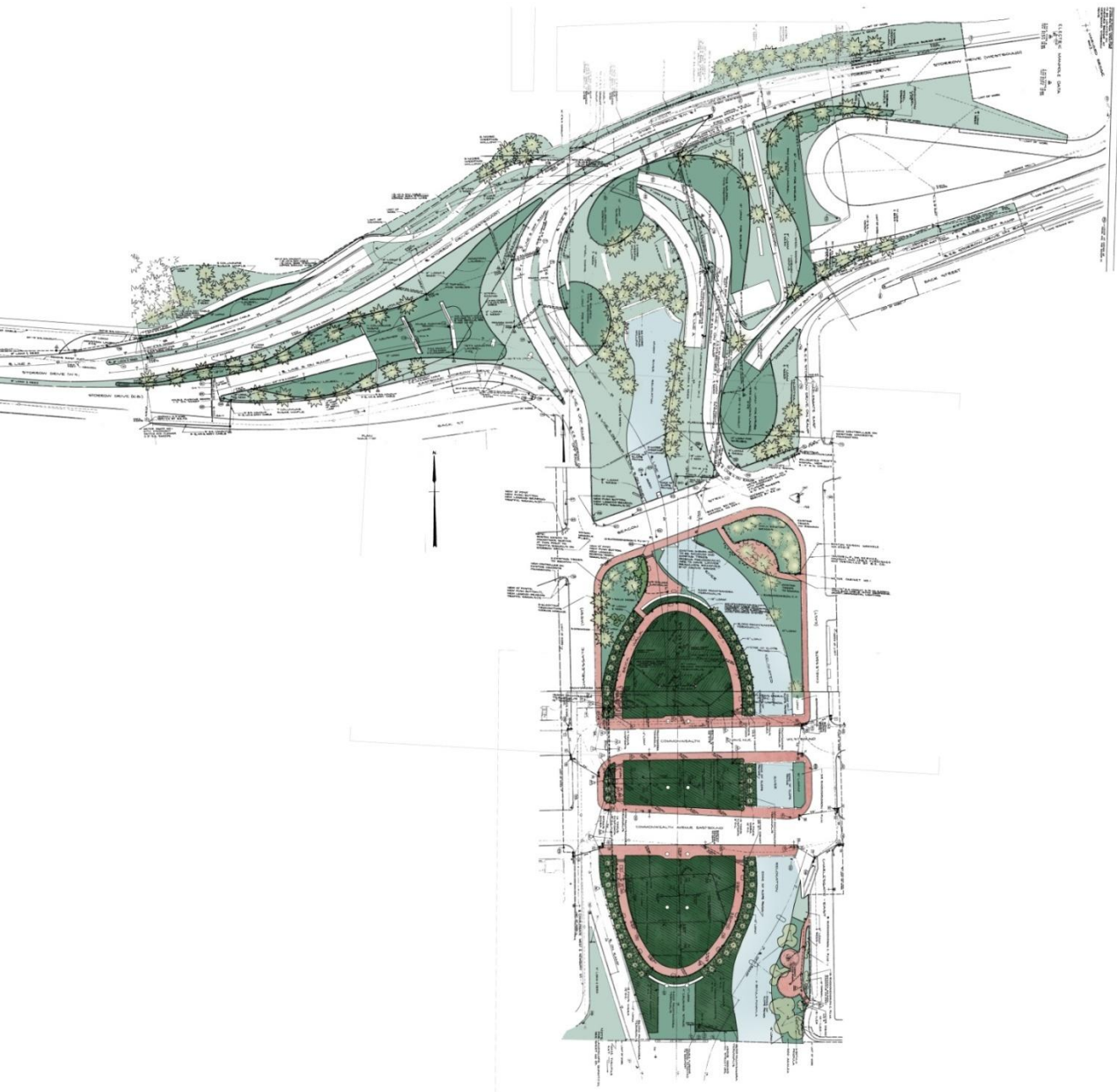
Design Principles

- **Improve the Muddy River water quality and habitat**
- **Reconnect Bostons' 3 park systems and neighborhoods across Charlesgate Park**
- **Celebrate Charlesgate Park's history**
- **Activate the site with new uses**



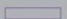
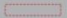





— Historic Water Line:





1963 (realized) Charlesgate Park plans by Moriece & Gary Landscape Architects



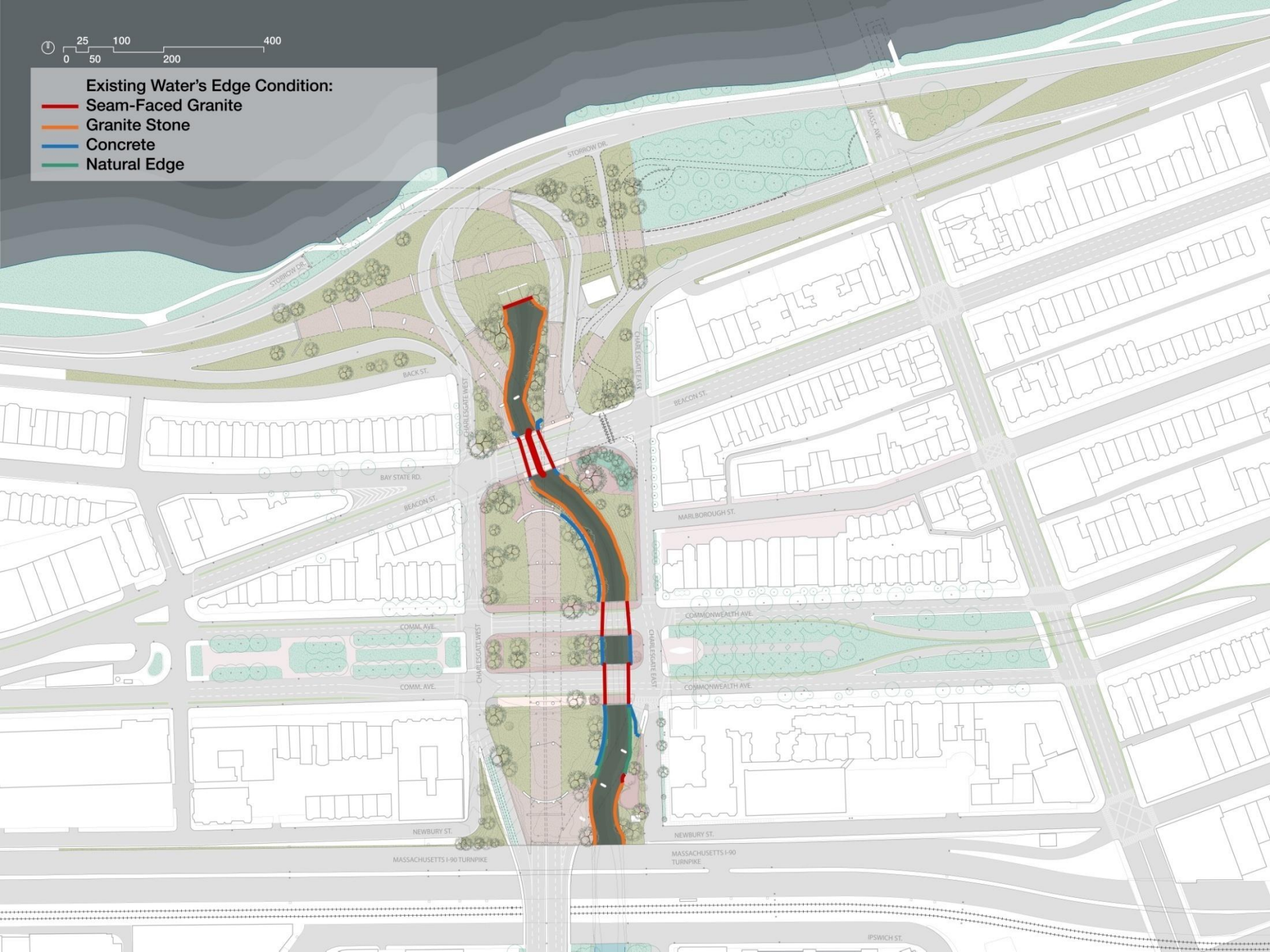
-  **Storm Drain:** underground; uncertain
(observed from existing site documentation provided)
-  **Storm Drain:** overhead; certain
(confirmed location on site)
-  **CSO**
-  **Catch Basins:**
On grade; certain (confirmed location on site)
-  **Catch Basins:**
On grade; uncertain (observed from existing site documentation provided)
-  **Catch Basins:**
On overpass; certain (confirmed location on site)
-  **Storm Water Outlet:**
uncertain (observed from existing site documentation provided)





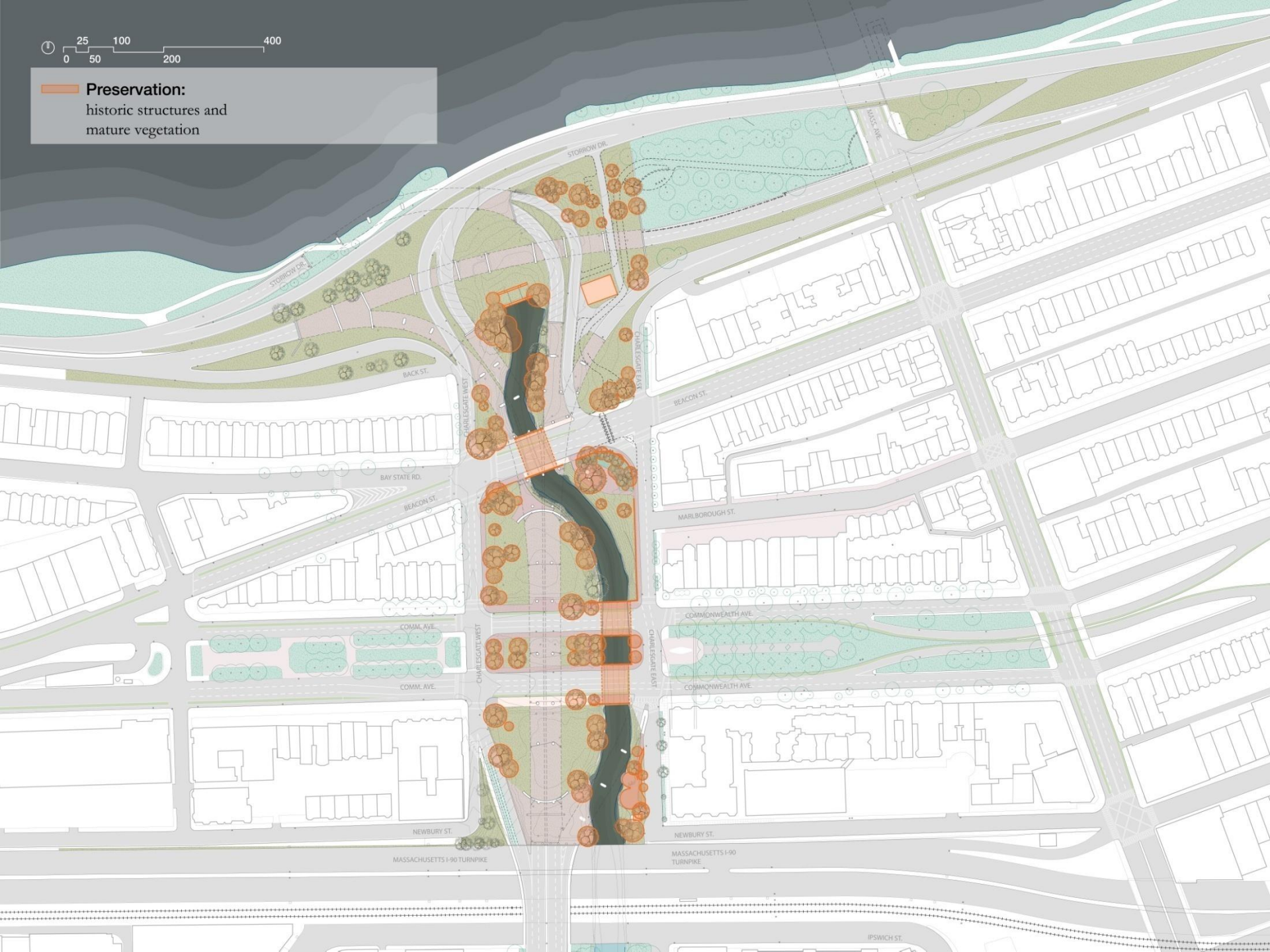
Existing Water's Edge Condition:

- Seam-Faced Granite
- Granite Stone
- Concrete
- Natural Edge





Preservation:
historic structures and
mature vegetation





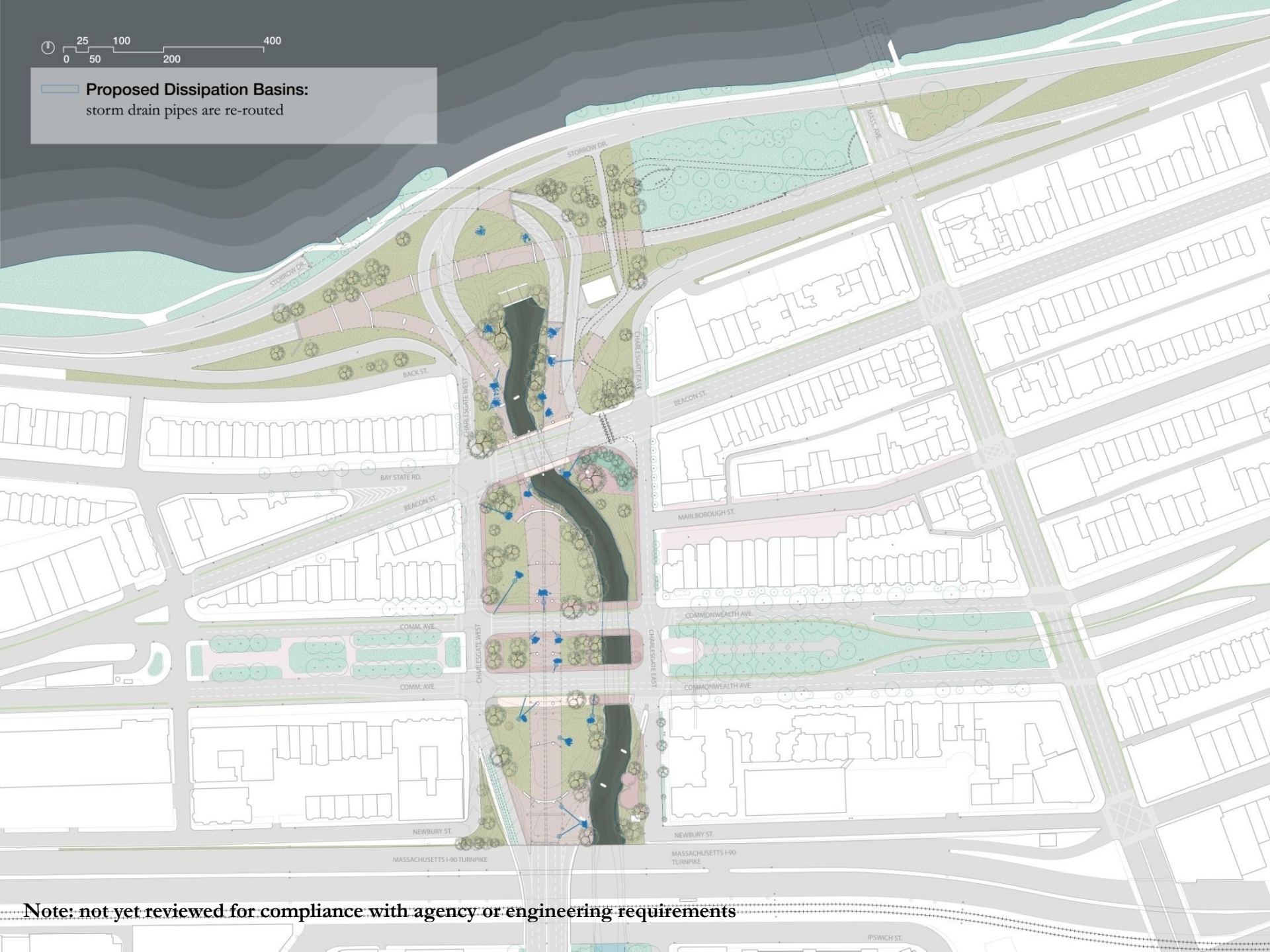
Proposed Re-Grading



Note: not yet reviewed for compliance with agency or engineering requirements



Proposed Dissipation Basins:
storm drain pipes are re-routed



Note: not yet reviewed for compliance with agency or engineering requirements



Proposed Connections:
walk paths and pedestrian bridges



Note: not yet reviewed for compliance with agency or engineering requirements

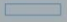






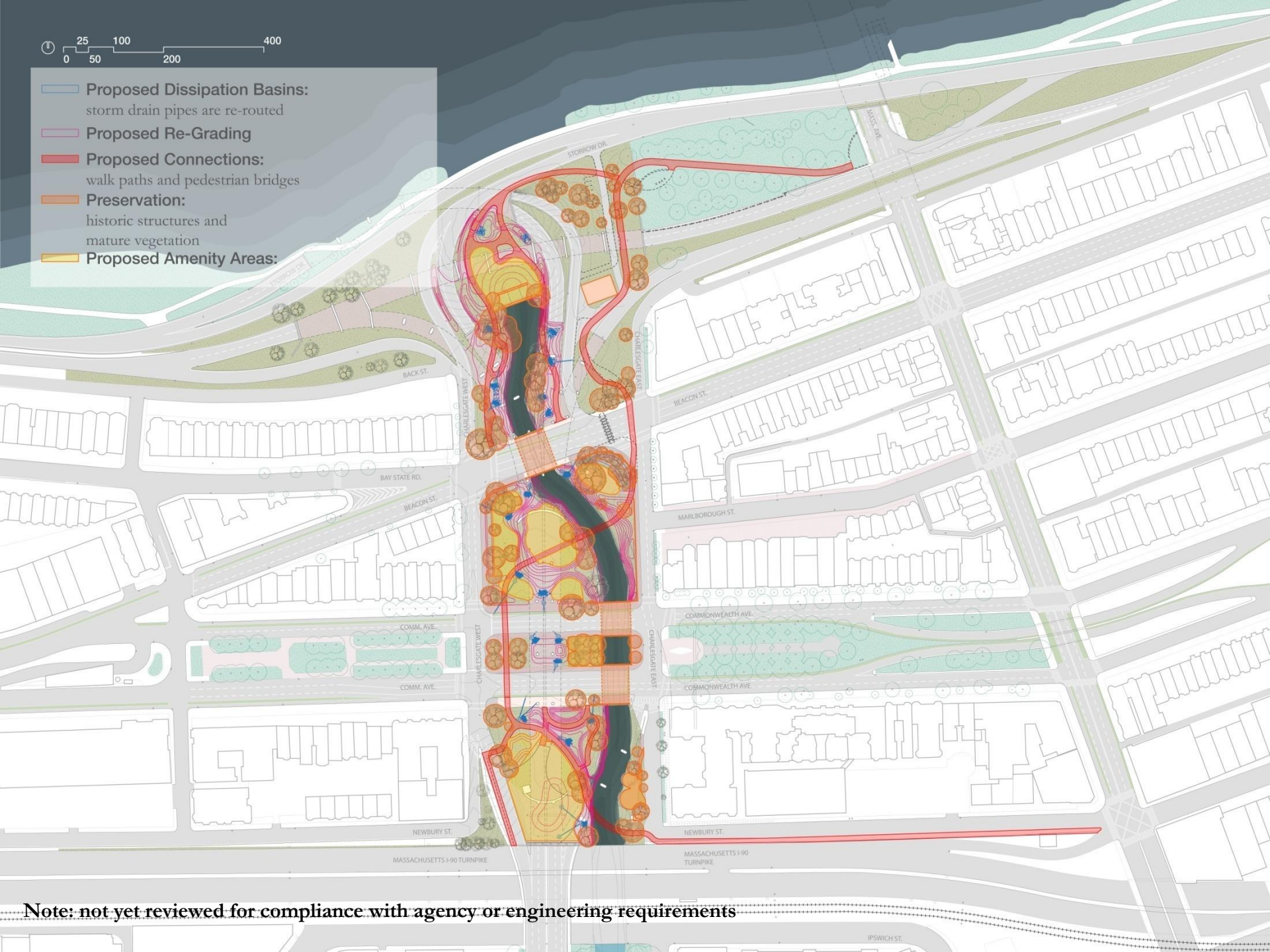
Proposed Amenity Areas:



Note: not yet reviewed for compliance with agency or engineering requirements



-  **Proposed Dissipation Basins:**
storm drain pipes are re-routed
-  **Proposed Re-Grading**
-  **Proposed Connections:**
walk paths and pedestrian bridges
-  **Preservation:**
historic structures and mature vegetation
-  **Proposed Amenity Areas:**



Note: not yet reviewed for compliance with agency or engineering requirements



OUTSIDE OF PROJECT SCOPE

IMPERVIOUS

- Walk Paths
 - Brick walkways
- Ground Cover
 - Pea stone gravel under overpass

PERVIOUS

- Lawn

WITHIN PROJECT SCOPE

IMPERVIOUS

- Walk Paths
 - Paved walkways
 - Granite Bridges

- Ground Cover
 - Rubber mulch

PERVIOUS

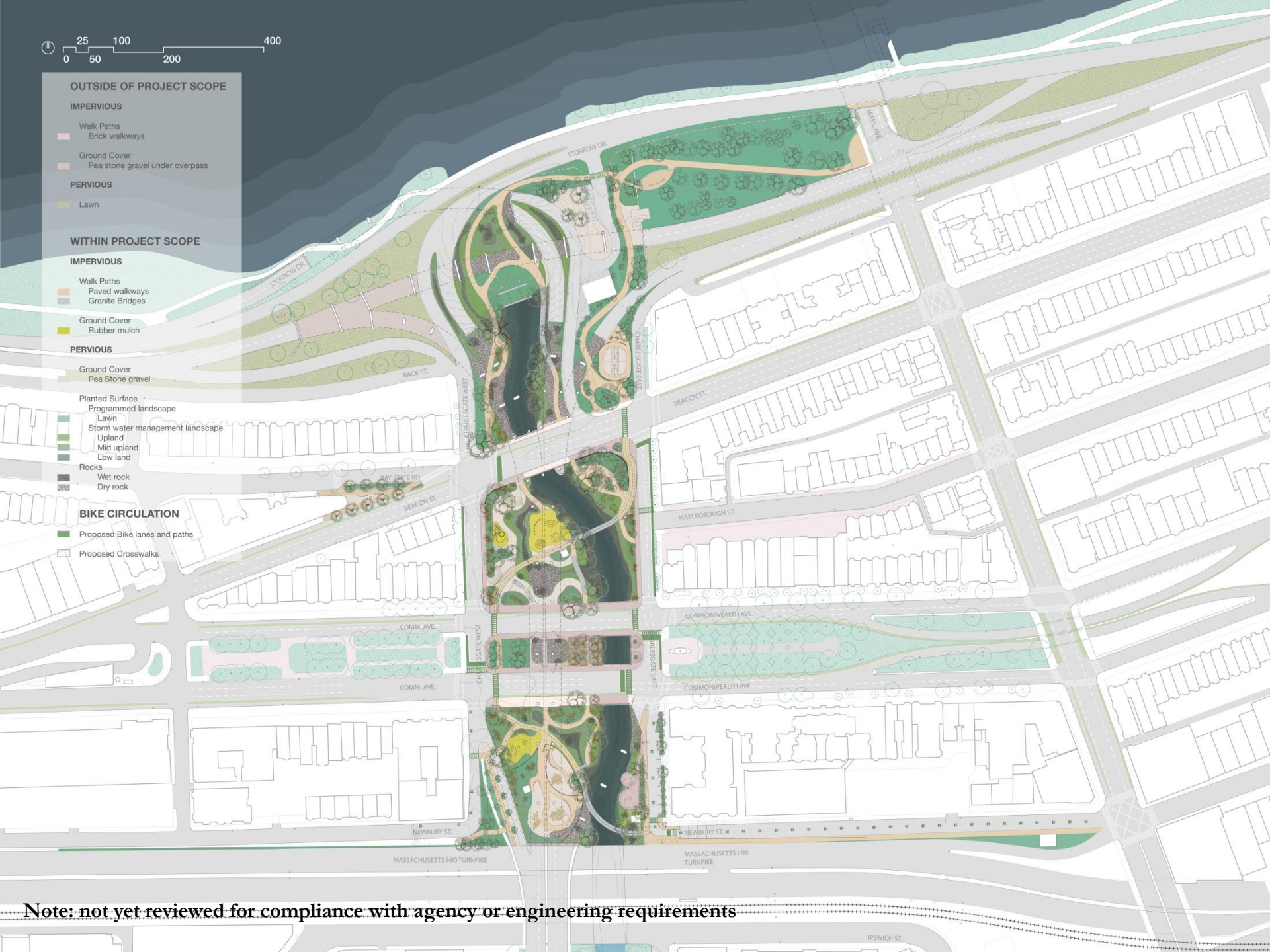
- Ground Cover
 - Pea Stone gravel

Planted Surface

- Programmed landscape
 - Lawn
 - Storm water management landscape
 - Upland
 - Mid upland
 - Low land
- Rocks
 - Wet rock
 - Dry rock

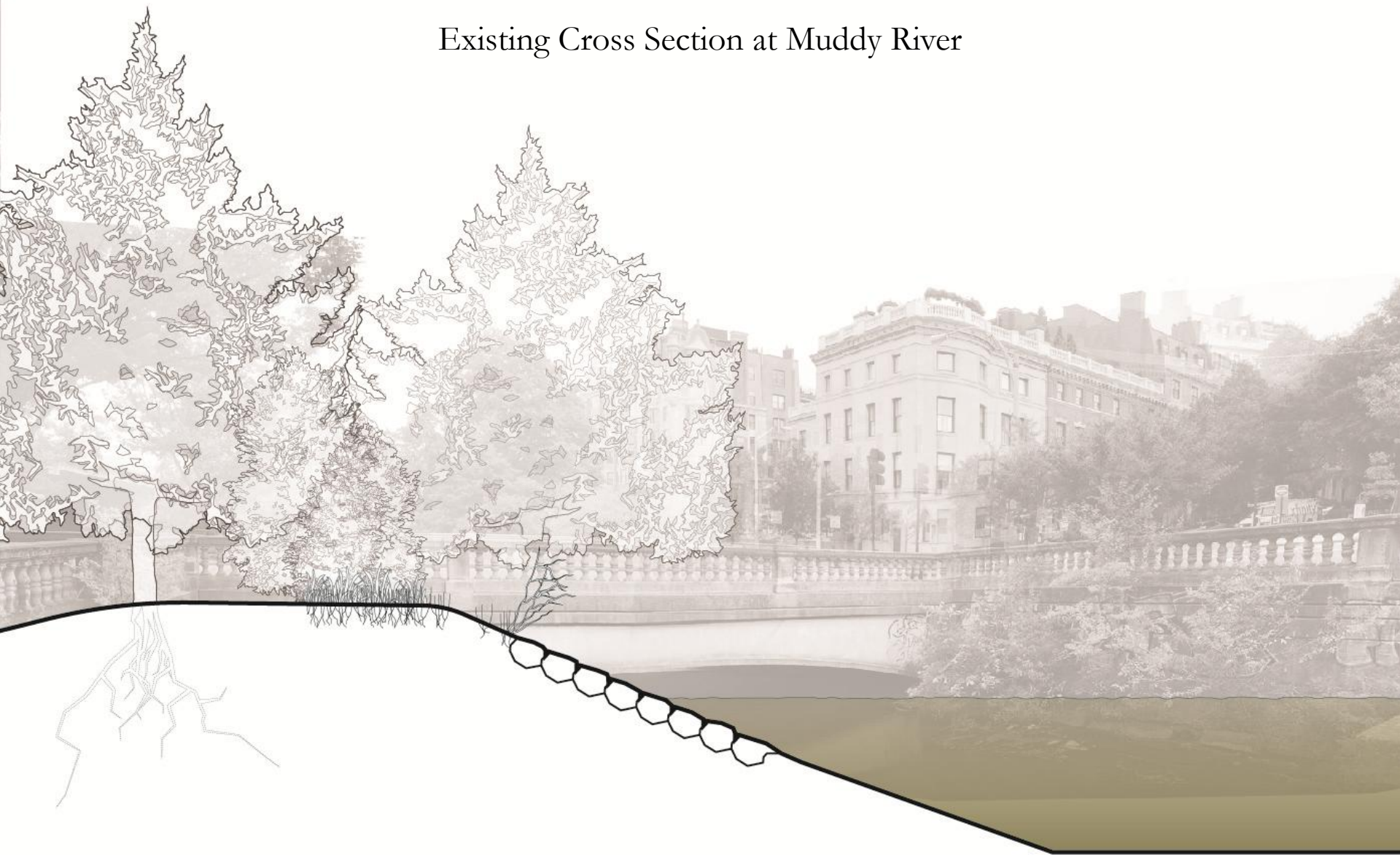
BIKE CIRCULATION

- Proposed Bike lanes and paths
- Proposed Crosswalks

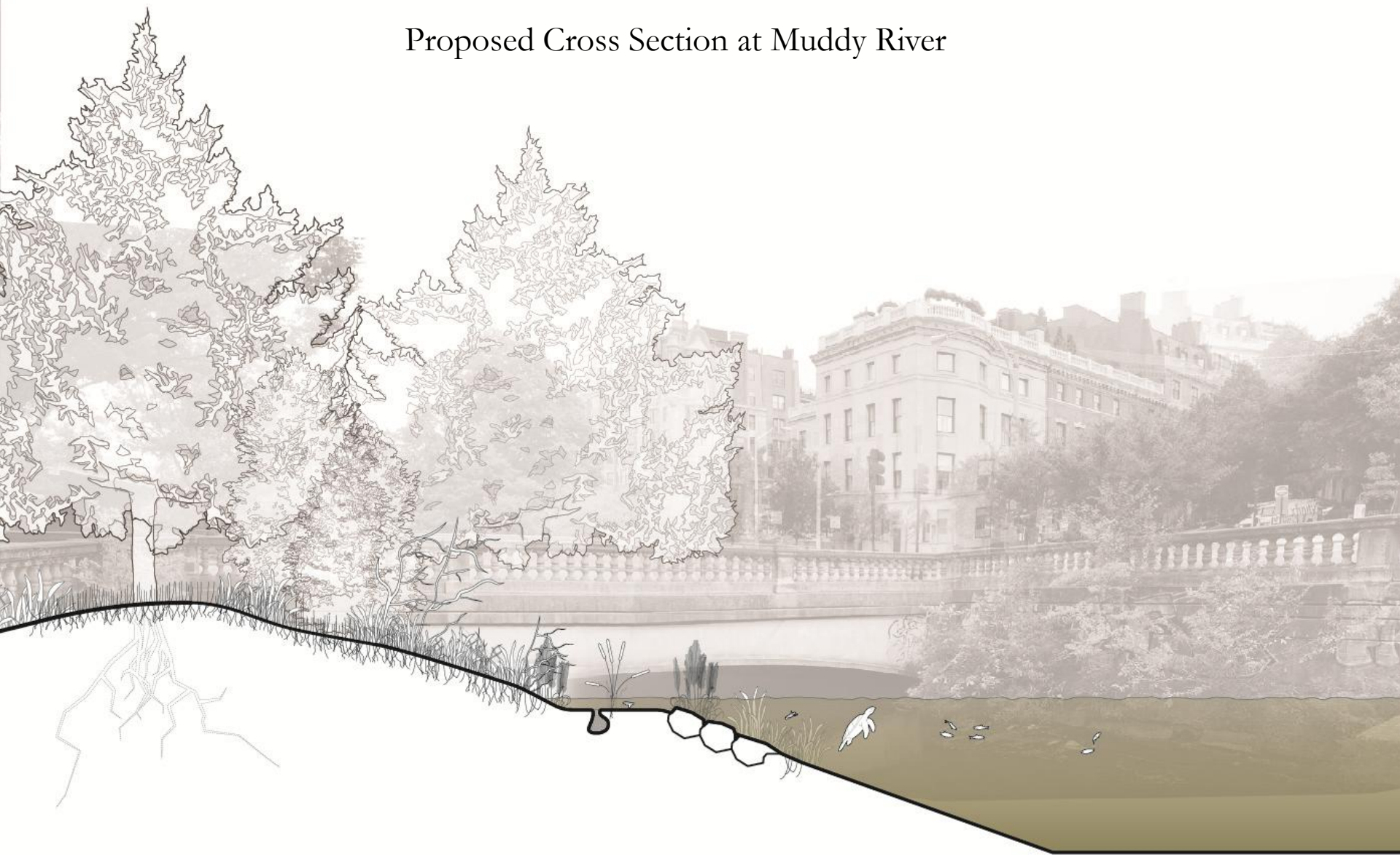


Note: not yet reviewed for compliance with agency or engineering requirements

Existing Cross Section at Muddy River

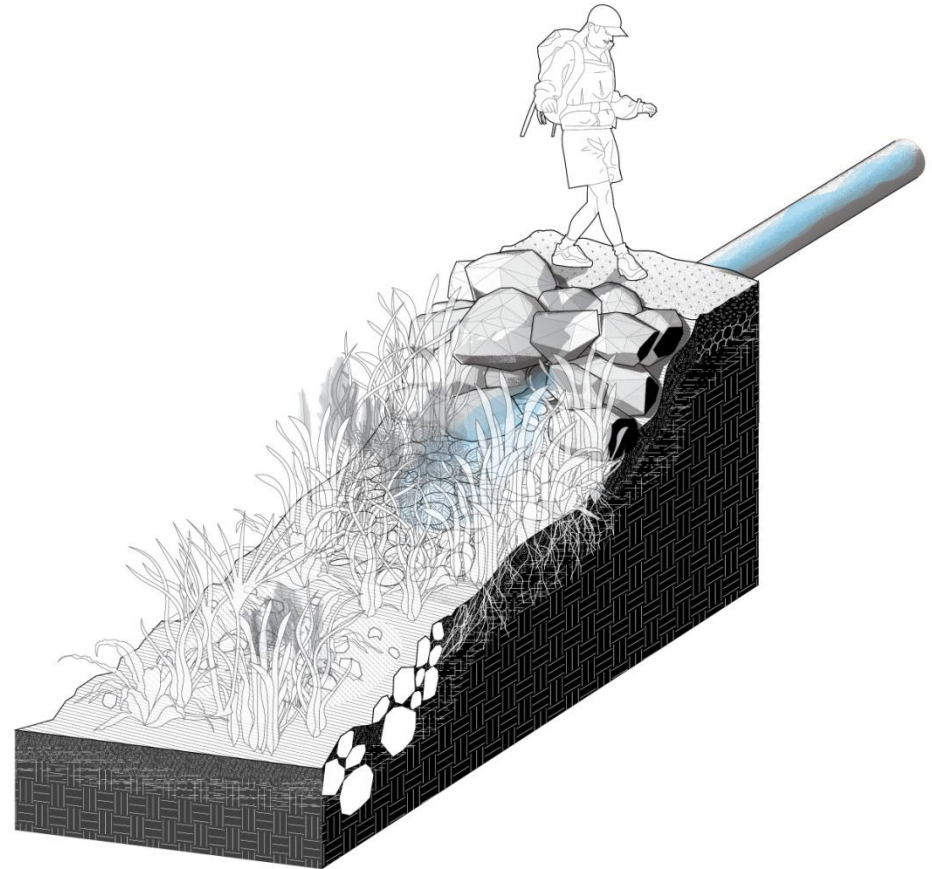


Proposed Cross Section at Muddy River

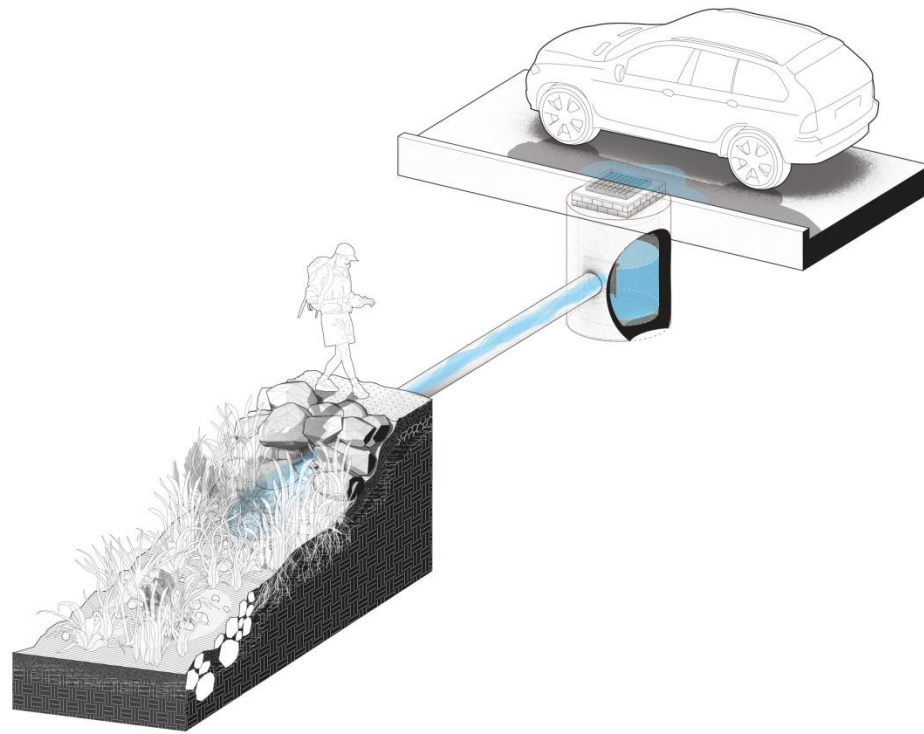




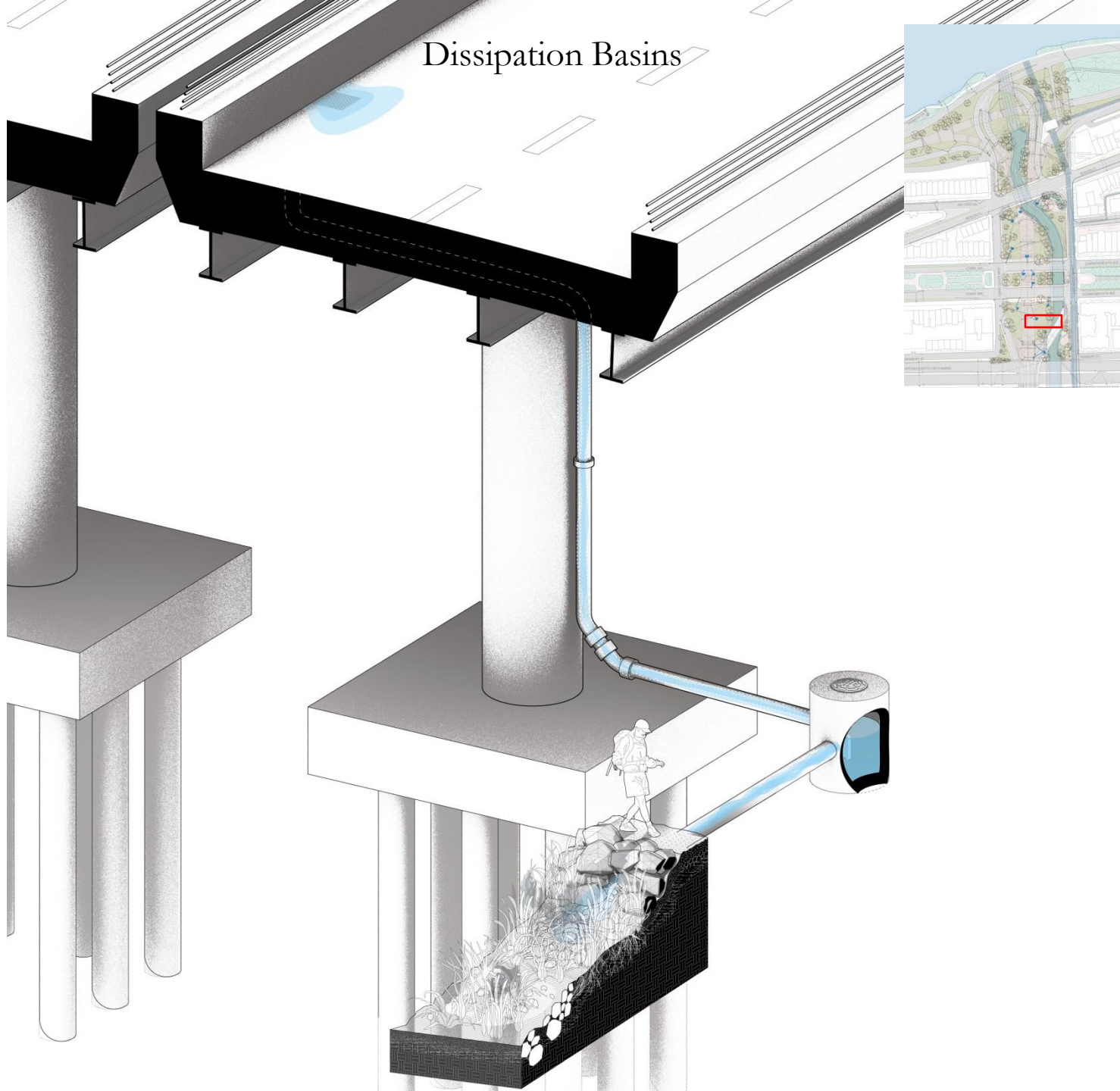
Dissipation Basins



Dissipation Basins



Dissipation Basins







Bridge over storm water landscape, Don River Park Toronto

Bicycle Accommodation Alternatives



Bicycle Accommodation Study

Alternative 1; Using Existing Roads



-  Crossings
-  Entering traffic

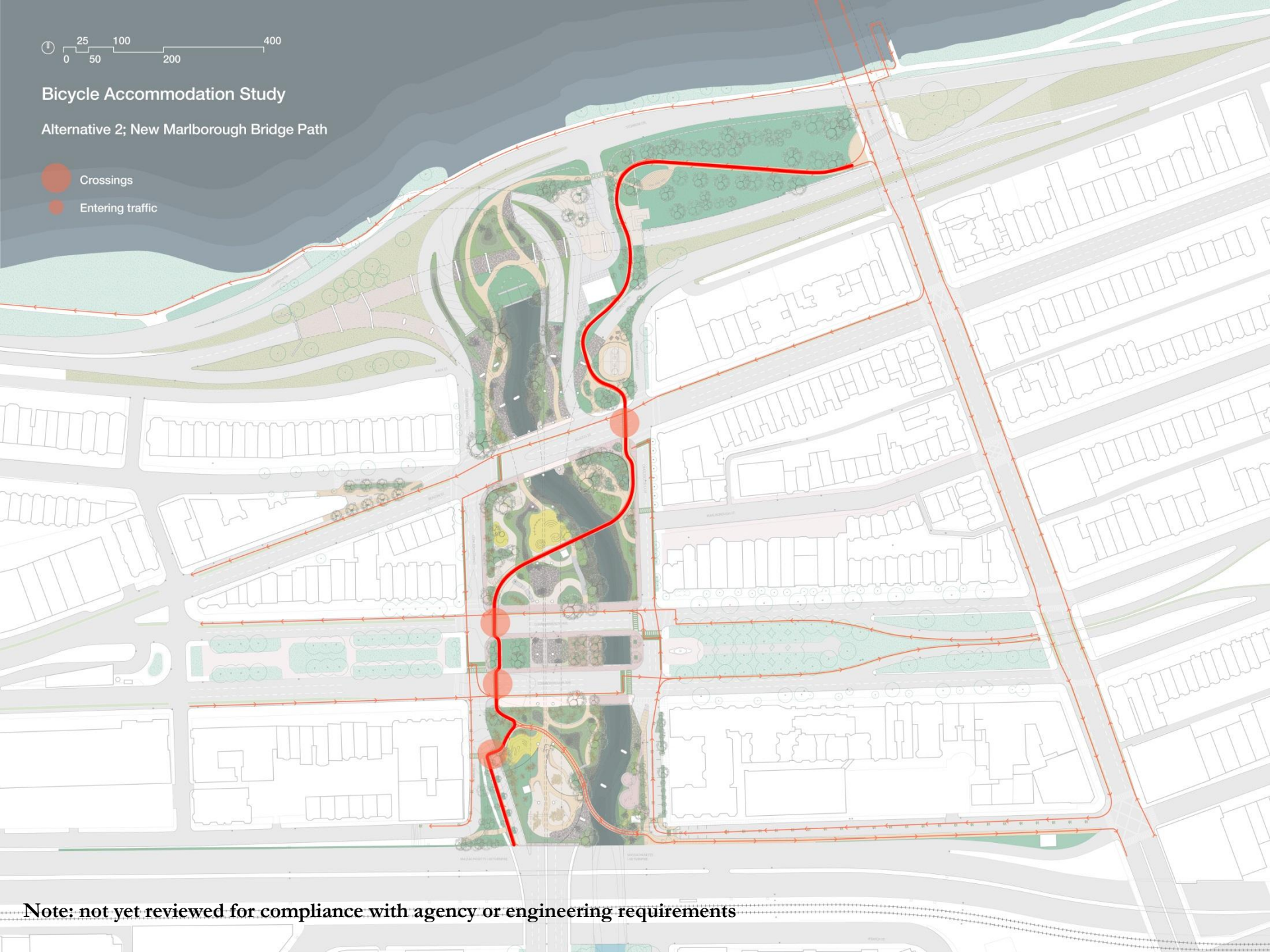




Bicycle Accommodation Study

Alternative 2; New Marlborough Bridge Path

-  Crossings
-  Entering traffic




Note: not yet reviewed for compliance with agency or engineering requirements



Bicycle Accommodation Study

Alternative 3; New Charlesgate West and Beacon Path

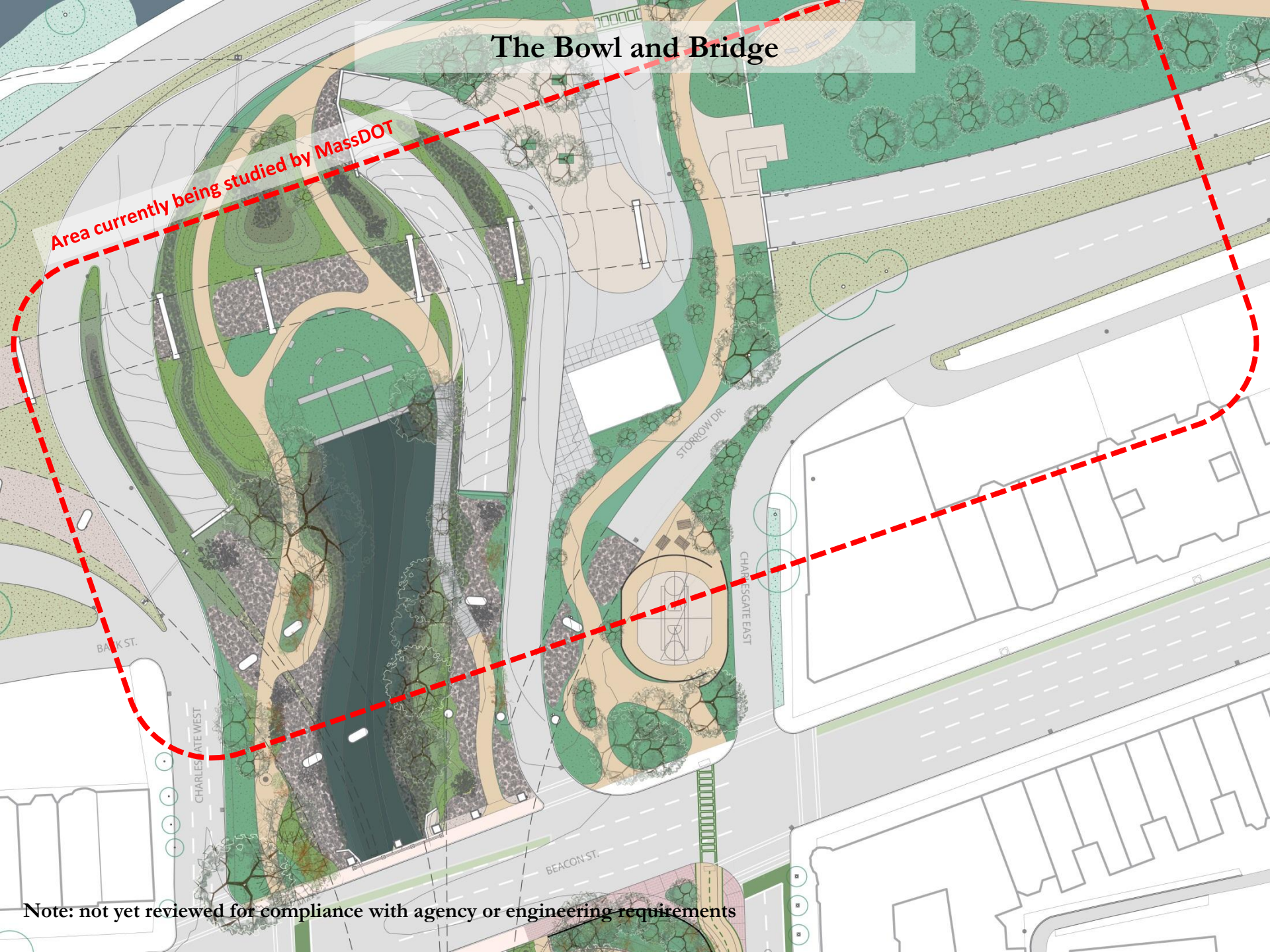
-  Crossings
-  Entering traffic



Note: not yet reviewed for compliance with agency or engineering requirements

The Bowl and Bridge

Area currently being studied by MassDOT



Note: not yet reviewed for compliance with agency or engineering requirements

The North Field and Patio



Note: not yet reviewed for compliance with agency or engineering requirements

The South Field



COMMONWEALTH AVE.

COMMONWEALTH AVE.

NEWBURY ST.

NEWBURY ST.

MASSACHUSETTS I-90 TURNPIKE

MASSACHUSETTS I-90 TURNPIKE

Note: not yet reviewed for compliance with agency or engineering requirements



Existing: from Commonwealth Ave looking south



Proposed: from Commonwealth Ave looking south



Existing: looking south at South Field



Proposed: looking south at South Field



Existing: from Beacon St looking south



Proposed: from Beacon St looking south



Existing: looking south from Storror EB ramp area



Proposed: looking south from Storrow EB ramp area



Existing: west edge of the Muddy, North Field



Proposed: west edge of the Muddy, North Field

Maintenance Planning

- Funding source possibilities
 - Endowment fund
 - Green Improvement District
 - Public-Private partnerships
 - Revenues (food vendors, etc)
 - Volunteer efforts and fundraising
- Maintenance and operations plan
- Field checklists
- Tools/equipment

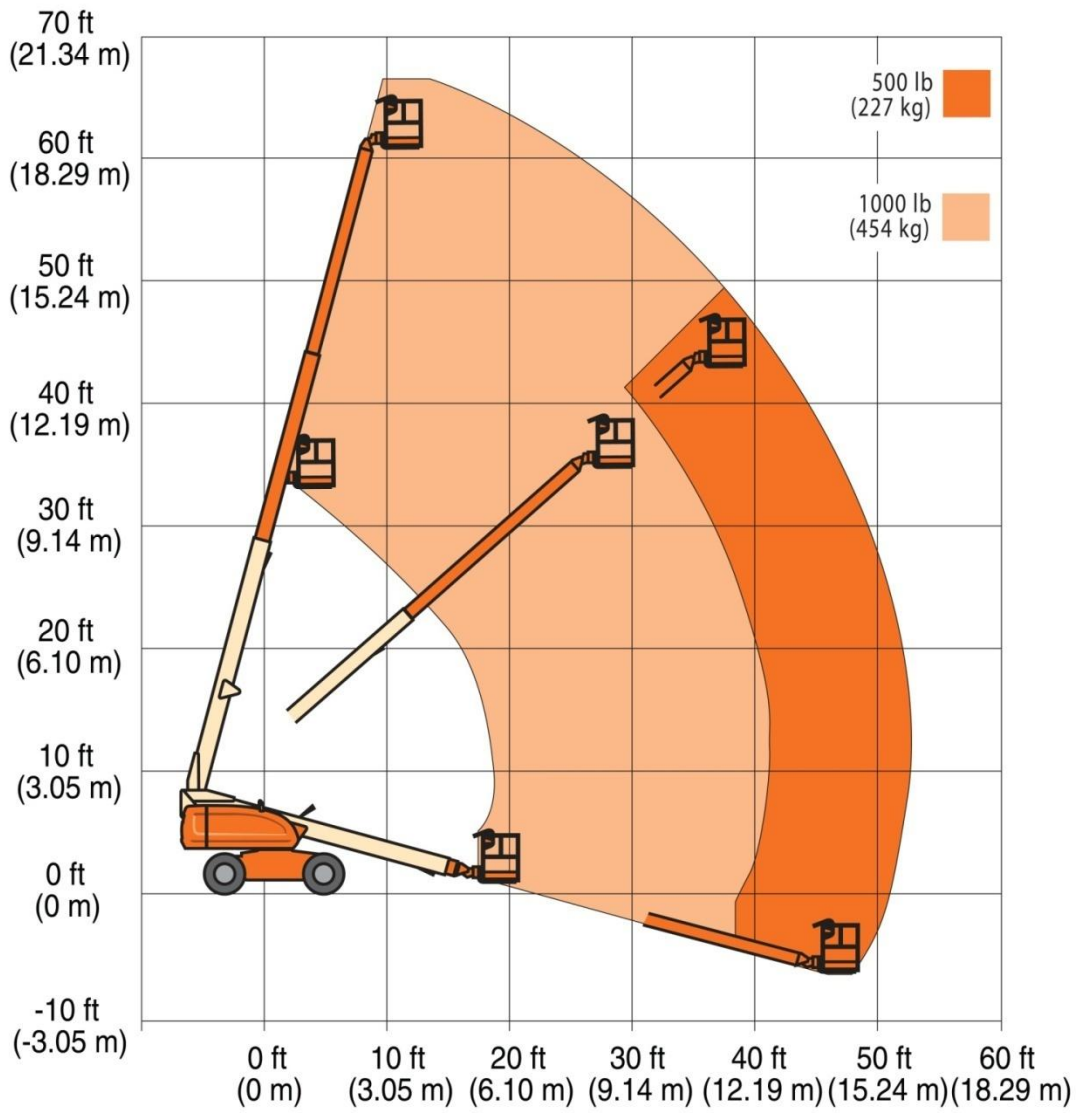
Maintenance Tasks – draft for discussion

(a preliminary list, based on Muddy River Restoration Project Maintenance Calendar for Charlesgate area)

- **Daily**
 - Trash and litter removal
- **Weekly**
 - Remove debris from watercourse
 - Sweep and remove debris from paths
 - Green storm water infrastructure inspections for functionality (no standing water over x hrs)
 - Weeding and pruning of plantings, including embankments and uplands
 - Mowing for any lawn areas
- **Seasonal or as needed**
 - Snow removal as needed
 - Leaf removal as needed
 - Remove invasive plant species
 - Plant replacement as needed
 - Seeding, soil testing
 - Repair damaged furniture and amenities (benches, trash barrels, light poles), trees
 - Remove fallen trees immediately
 - Irrigation systems repairs/seasonal shut-offs
 - Remove debris/clean sediment from storm water structures as needed

Designing for Agency Maintenance

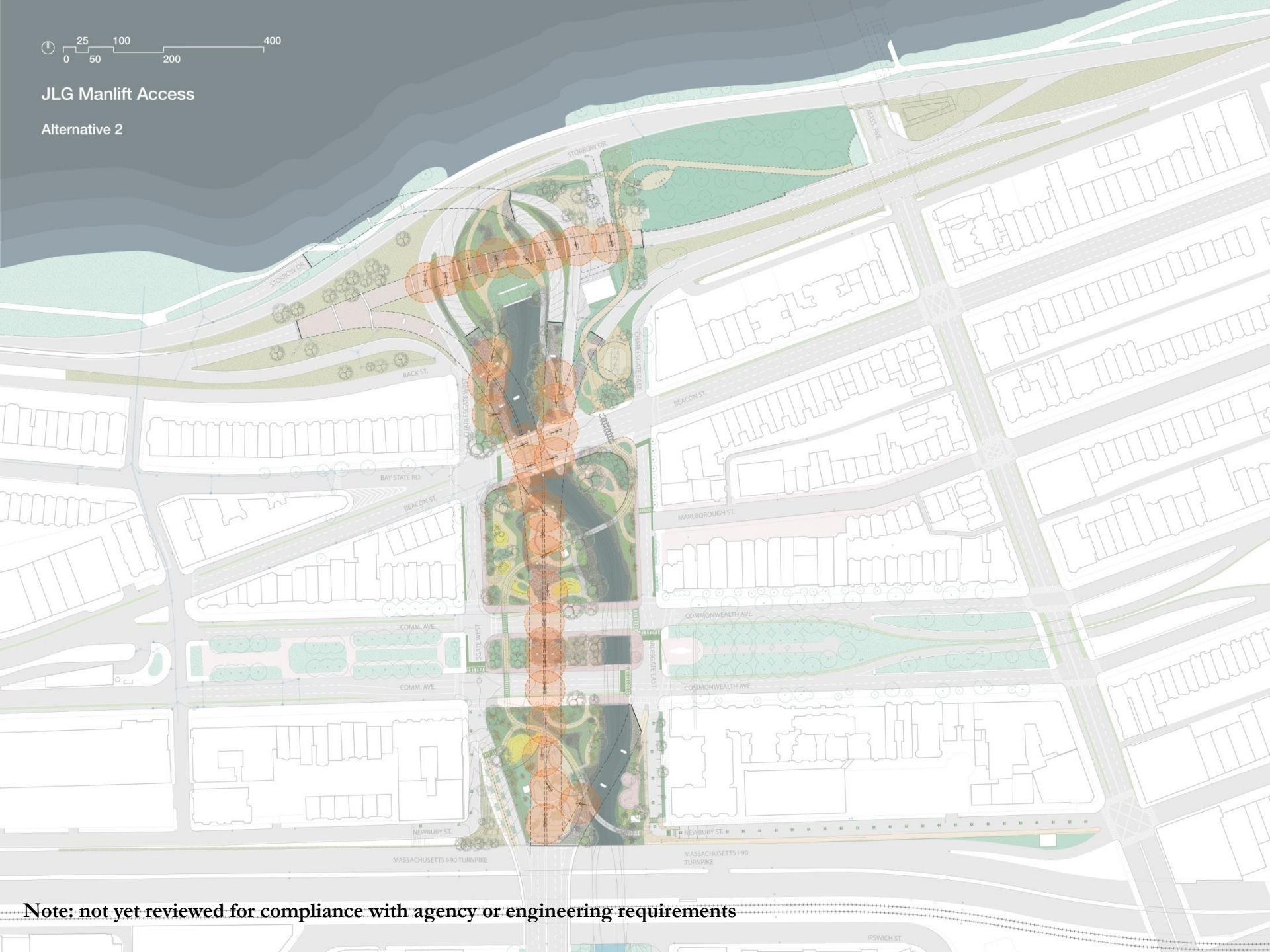
JLG 600S





JLG Manlift Access

Alternative 2



Note: not yet reviewed for compliance with agency or engineering requirements



Catch Basin Cleaning Truck Access

Alternative 2



Note: not yet reviewed for compliance with agency or engineering requirements

Community Feedback Work Tables

7:45-8:40 PM

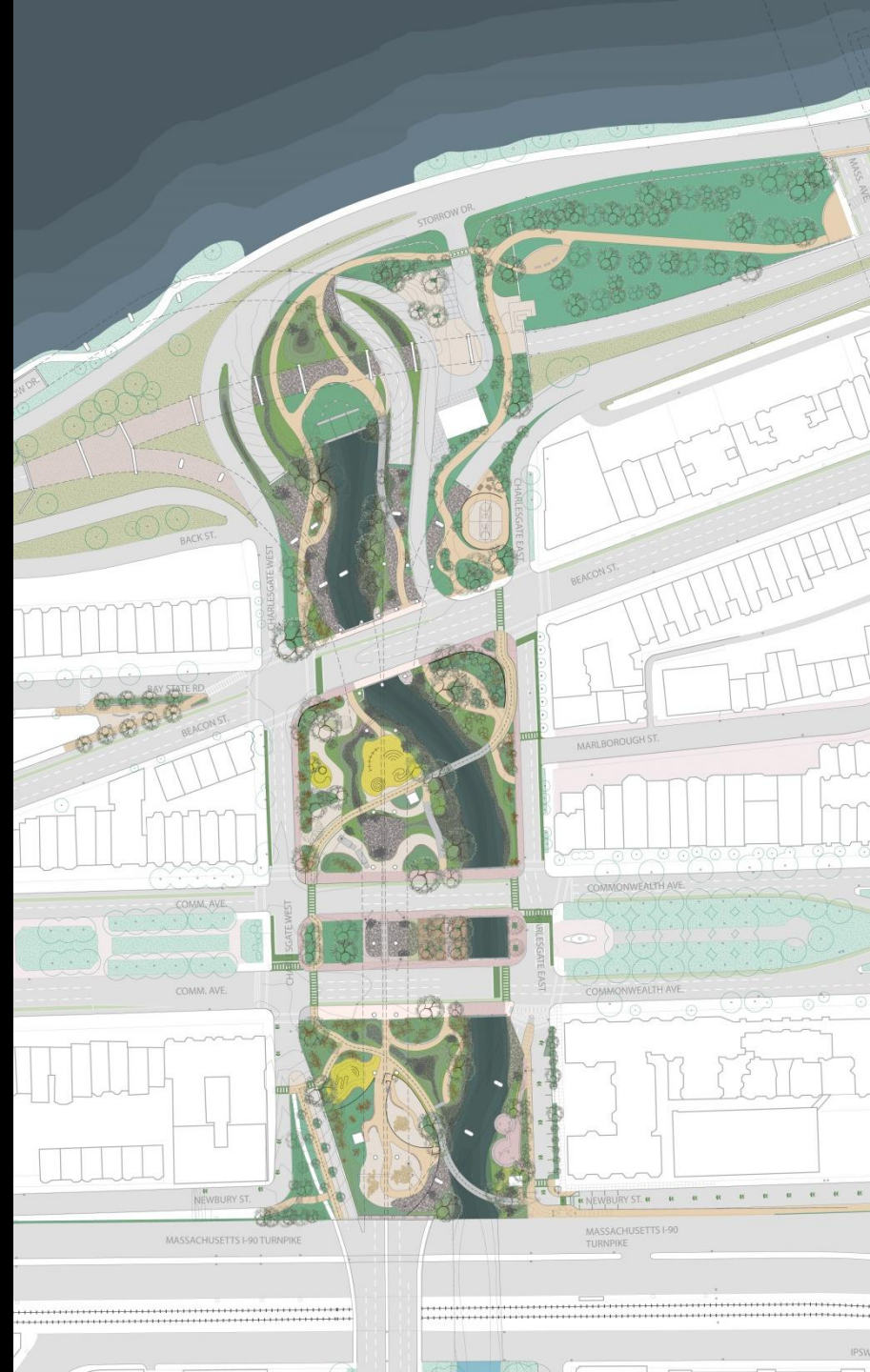
Please choose a recorder to take notes and report back to the group.

- **South Field and the Circles**
- **North Field, the Grove, and the Patio**
- **The Bowl and Bridge**
- **Partnerships and Maintenance**
- **Bike Accommodations**
- **Priorities and Short Term Improvements**

Reporting Back

8:45-9PM

- South Field and the Circles
- North Field, the Grove, and the Patio
- The Bowl and Bridge
- Partnerships and Maintenance
- Bike Accommodations
- Priorities and Short Term Improvements



Next Steps

Where we're headed:

- Charlesgate Cleanup– 9am – 12pm on April 28, 2018
- Charlesgate in Bloom Spring Benefit – 5pm – 7pm on April 28, 2018
- Conclusion of the Concept Design and Outreach Process:
 - **Join us for the 4th Talk About – June 2018 (date tbd)**
 - Final report:
 - Concept design plans and perspectives
 - Order-of-magnitude cost estimate
 - Phasing recommendations for shorter term and longer term improvements

What comes next:

- Fundraising for:
 - Design and engineering development and permitting
 - Continuing to work with our agency partners and their review processes
 - Updates to the community as the design develops
 - Capital improvements
 - Maintenance

There are several great ways you can get involved and support this effort:

1) Tell your neighbors about this process, ask them to join, and spread the word about the next meeting.

2) Join Charlesgate Alliance online:

<https://charlesgatealliance.org/join-us-2/>

You will then get an invitation to join our Google group to discuss Charlesgate Park and its adjoining neighborhoods.

3) Follow us on Facebook and Instagram:

facebook.com/charlesgatealliance/

[@charlesgatealliance](https://instagram.com/charlesgatealliance)

4) Consider a donation. Your company may also offer financial support. Donations are tax deductible:

<https://www.emeraldnecklace.org/charlesgate-alliance/>

5) Tell your elected representatives that this matters to you!

6) Come to our Summer meeting and bring friends.

Visit charlesgatealliance.org

Send us feedback on the concept plan:

The concept plan will be posted soon on:

Charlesgatealliance.org

Email any comments to:

Charlesgatealliance@gmail.com

Please return comments by April 30, 2018 for incorporation in concept plan for the 4th Talk About.